



FIRST NATURAL BRANDS LTD

SAFETY DATA SHEET

(In compliance with EU regulation 1907/2006 and its adaptations)

LAVENDER ESSENTIAL OIL, FINE OR CLONAL OR EAST EUROPEAN TYPE

Version: 4.0

I. Identification of the substance/ mixture and of the company / undertaking

1.1 Product identifier

INCI NAME: *Lavandula angustifolia* oil
COMMERCIAL NAME: Lavender essential oil - conventional (and organic)
CAS: 90063-37-9
EC/EINECS: 289-995-2
REACH registration number: REACH registered N/A due to imports < 1t/a.

Processes used for the manufacture of the substance:

Water steam distillation of the flowering tops of *Lavandula angustifolia ssp angustifolia* (Miller) and subsequent separation of the water from the essential oil. The subsequent separation is a spontaneous physical process, which normally takes place in a separator (Florentine flask) enabling an easy isolation of the separated oil.

1.2 Relevant identified uses of the substances or mixture and uses advised against

Fragrance, Flavour and Cosmetic - Do not use during pregnancy or breastfeeding, do not use in children younger than 30 months

1.3 Details on the supplier of the safety data sheet

First Natural Brands Limited
Millennium House
King Business Centre
Reeds Lane
Sayers Common
West Sussex
BN6 9LS
UK
Telephone: +44 (0)1273 325666 (Office operating hours)
Email: info@fnlbrands.com

1.4 Emergency telephone number

Emergency Telephone Number: +44 (0)1273 325666 (Office operating hours)



FIRST NATURAL BRANDS LTD

SAFETY DATA SHEET

(In compliance with EU regulation 1907/2006 and its adaptations)

LAVENDER ESSENTIAL OIL, FINE OR CLONAL OR EAST EUROPEAN TYPE

Version: 4.0

2. Hazards identification

2.1 Classification of the substance or mixture

Asp. Tox. 1, Skin Sens. 1(B), Eye Irrit. 2(A), Aquatic Chronic 3

2.2 Label elements

Signal Word: Danger

Hazard Statement: H304: Aspiration hazard, Hazard Category 1
H317: Skin sensitisation, Hazard Category 2
H319: Serious eye damage/eye irritation, Hazard Category 2
H412: Hazardous to the aquatic environment – Chronic Hazard Category 3

Precautionary statement prevention: P261, P264, P272, P273, P280

Precautionary statement response: P301+P310, P305 + P351 + P338, P321, P333 + P313, P337 + P313, P362, P363

Precautionary statement Storage: P405

Precautionary statement disposal: P501



2.3 Other hazards

Allergens: Limonene, Linalool, Geraniol, Coumarin

CMR: Para-Cymene, Gamma-Terpinene

3 Composition/ Information on ingredients:

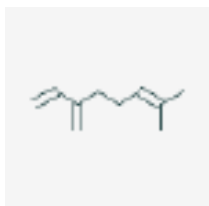
3.1 Substance:

Natural Complex Substance (NCS), 100% pure and natural

Name: β -Mycrene; **IUPAC name:** 7-methyl-3-methylideneocta-1,6-diene; <5%

SMILES: CC(=CCCC(=C)C=C)C

Molecular Formula: C₁₀ H₁₆





FIRST NATURAL BRANDS LTD

SAFETY DATA SHEET

(In compliance with EU regulation 1907/2006 and its adaptations)

LAVENDER ESSENTIAL OIL, FINE OR CLONAL OR EAST EUROPEAN TYPE

Version: 4.0

EC number: 204-622-5

CAS number: 123-35-3

Signal word: Danger

Flam. Liq. 3, Asp. Tox. 1, Skin. Irrit. 2, Eye Irrit. 2, Aquatic Chronic 2

H226, H304, H315, H319, H411

P210, P233, P240, P241, P242, P243, P264, P273, P280

P301 + P310, P302 + P352, P303 + P361 + P353, P305 + P351 + P338, P321, P331, P332 + P313, P337 + P313, P362, P370 + P378, P391

P403 + P235, P405

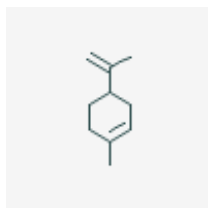
P501



Name: D-Limonene; IUPAC name: (4R)-1-methyl-4-(prop-1-en-2-yl)cyclohex-1-ene; <1%

SMILES: CC1=CCC(CC1)C(=C)C

Molecular Formula: C₁₀ H₁₆



EC numbers: 227-813-5

CAS numbers: 5989-27-5

Signal word: Danger

Flam Liq. 3, Asp. Tox. 1, Skin Irrit. 2, Skin Sens. 1, Aquatic Acute 1, Aquatic Chronic 1



FIRST NATURAL BRANDS LTD

SAFETY DATA SHEET

(In compliance with EU regulation 1907/2006 and its adaptations)

LAVENDER ESSENTIAL OIL, FINE OR CLONAL OR EAST EUROPEAN TYPE

Version: 4.0

H226, H304, H315, H317, H400, H410

P210, P233, P240, P241, P242, P243, P261, P264, P273, P280

P301 + P310, P302 + P352, P303 + P361 + P353, P331, P333 + P313, P362, P363, P370 + P378, P391

P403 + P233, P403 + P235, P405

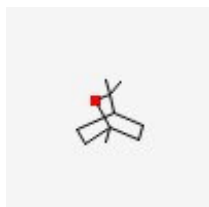
P501



Name: 1,8-Cineole (Eucalyptol); IUPAC name: 1,3,3-trimethyl-2-oxabicyclo[2.2.2]octane; ≤3%

SMILES: CC1(C2CCC(O1)(CC2)C)C

Molecular formula: C₁₀ H₁₈ O



EC number: 207-431-5

CAS number: 470-82-6

Signal word: Warning

Flam. Liq. 3, Skin Sens. 1

H226, H317

P210, P233, P240, P241, P242, P243, P261, P272, P280

P303 + P361 + P353, P370 + P378, P302 + P352, P333 + P313, P363

P403 + P235

P501





FIRST NATURAL BRANDS LTD

SAFETY DATA SHEET

(In compliance with EU regulation 1907/2006 and its adaptations)

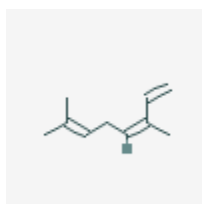
LAVENDER ESSENTIAL OIL, FINE OR CLONAL OR EAST EUROPEAN TYPE

Version: 4.0

Name: Cis- β -Ocimene; IUPAC name: (3Z)-3,7-dimethylocta-1,3,6-triene; 1 to 10%

SMILES: C=C\C(=C\CCC(=C)C)C

Molecular Formula: C₁₀ H₁₆



EC number: 222-081-3

CAS number: 3338-55-4

Signal word: Danger

Flam Liq. 3, Asp. Tox. 1

H226, H304

P210, P233, P240, P241, P242, P243, P280

P301 + P310, P303 + P361 + P353, P331, P370 + P375

P403 + P235, P405

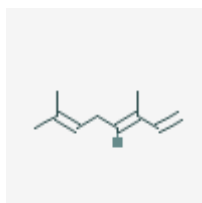
P501



Name: Trans- β -Ocimene; IUPAC name: (3E)-3,7-dimethylocta-1,3,6-triene; 0.5 to 6%

SMILES: CC(=CCC=C(C)C=C)C

Molecular Formula: C₁₀ H₁₆



EC number: 237-641-2

CAS number: 13877-91-3



FIRST NATURAL BRANDS LTD

SAFETY DATA SHEET

(In compliance with EU regulation 1907/2006 and its adaptations)

LAVENDER ESSENTIAL OIL, FINE OR CLONAL OR EAST EUROPEAN TYPE

Version: 4.0

Signal word: Danger

Flam Liq. 3, Asp. Tox. 1, Skin Irrit. 2, Aquatic Acute 1, Aquatic Chronic 2

H226, H304, H315, H400, H411

P210, P233, P240, P241, P242, P243, P264, P273, P280

P301 + P310, P302 + P352, P303 + P361 + P353, P321, P331, P332 + P313, P362, P370 + P375, P391

P403 + P235, P405

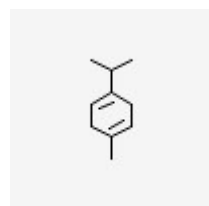
P501



Name: Gamma - Terpinene /p-mentha-1,4-diene; IUPAC name: 1-isopropyl-4-methylcyclohexa-1,4-diene; <1%

SMILES: CC1=CCC(=CC1)C(C)C

Molecular Formula: C₁₀ H₁₆



EC number: 202-794-6

CAS number: 99-85-4

Signal word: Warning

Flam. Liq. 3, Repr. 2, Aquatic Chronic 2

H226, H361, H411

P201, P202, P210, P233, P240, P241, P242, P243, P273, P280

P303 + P361 + P353, P308 + P313, P331, P370 + P378, P391

P403 + P235, P405

P501



FIRST NATURAL BRANDS LTD

SAFETY DATA SHEET

(In compliance with EU regulation 1907/2006 and its adaptations)

LAVENDER ESSENTIAL OIL, FINE OR CLONAL OR EAST EUROPEAN TYPE

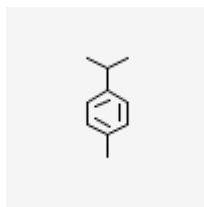
Version: 4.0



Name: Para - Cymene; IUPAC name: 1-methyl-4-propan-2-ylbenzene; ≤1%

SMILES: CC1=CC=C(C=C1)C(C)C

Molecular Formula: C₁₀ H₁₄



EC number: 202-796-7

CAS number: 99-87-6

Signal word: Danger

Flam. Liq. 3, Asp. Tox. 1, Repr. 2 (oral route), Aquatic Chronic 2

H226, H304, H361, H411

P201, P202, P210, P233, P240, P241, P242, P243, P273, P280

P301 + P310, P303 + P361 + P353, P308 + P313, P331, P370 + P378, P391

P403 + P235, P405

P501



Name: 1-Octen-3-yl acetate; IUPAC Name: oct-1-en-3-yl acetate; <1%

SMILES: CCCCC(C=C)OC(=O)C

Molecular Formula: C₁₀H₁₈O₂



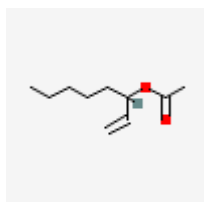
FIRST NATURAL BRANDS LTD

SAFETY DATA SHEET

(In compliance with EU regulation 1907/2006 and its adaptations)

LAVENDER ESSENTIAL OIL, FINE OR CLONAL OR EAST EUROPEAN TYPE

Version: 4.0



EC number: 219-474-7

CAS number: 2442-10-6

Signal word: Warning

Acute Tox. 4 (oral), Skin Sens. 1

H302, H317

P261, P264, P270, P272, P280

P301+P312, P302+P352, P321, P330, P333+P313, P363

P501



Name: Bornan-2-one (Camphor); IUPAC name: 1,7,7-trimethylbicyclo[2.2.1]heptan-2-one; ≤ 1.5%

SMILES: CC1(C2CCC1(C(=O)C2)C)C

Molecular Formula: C₁₀ H₁₆ O



EC number: 200-945-0

CAS number: 76-22-2

Signal word: Warning

Flam. Sol. 2, Acute Tox. 4 (oral), Acute Tox. 4 (inhalativ), Skin Sens. 1B, Eye Irrit. 1, STOT SE 2, Aquatic Chronic 2

H228, H302, H332, H317, H318, H371, H411



FIRST NATURAL BRANDS LTD

SAFETY DATA SHEET

(In compliance with EU regulation 1907/2006 and its adaptations)

LAVENDER ESSENTIAL OIL, FINE OR CLONAL OR EAST EUROPEAN TYPE

Version: 4.0

P210, P240, P241, P260, P261, P264, P270, P271, P272, P273, P280

P301 + P312, P302 + P352, P304 + P340, P305 + P351 + P338, P309 + P311, P310, P321, P330, P332 + P313, P363, P370 + P378, P391

P405

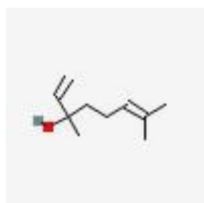
P501



Name: Linalool; IUPAC name: (R)3,7-dimethyl-1,6-octadien-3-ol; 20 to 43%

SMILES: CC(=CCCC(C)(C=C)O)C

Molecular formula: C₁₀ H₁₈ O



EC number: 204-811-2

CAS number: 126-91-0

Signal word: Warning

Skin Sens. 1B

H317

P261, P272, P280

P302 + P352, P333 + P313, P321, P363

P501





FIRST NATURAL BRANDS LTD

SAFETY DATA SHEET

(In compliance with EU regulation 1907/2006 and its adaptations)

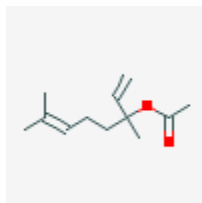
LAVENDER ESSENTIAL OIL, FINE OR CLONAL OR EAST EUROPEAN TYPE

Version: 4.0

Name: Linalyl acetate; IUPAC name: 3,7-dimethylocta-1,6-dien-3-yl acetate; 25 to 47%

SMILES: CC(=CCCC(C)(C=C)OC(=O)C)C

Molecular formula: C₁₂ H₂₀ O₂



EC number: 204-116-4

CAS number: 115-95-7

Signal word: Warning

Skin Irrit. 2, Skin Sens. 1, Eye Irrit. 2

H315, H317, H319

P261, P264, P272, P280

P302 + P352, P305 + P351 + P338, P321, P332 + P313, P337 + P313, P362, P363

P501



Name: β -Caryophyllene; IUPAC name: trans-(1R,9S)-4,11,11-trimethylbicyclo[7.2.0]undec-4-ene; \leq 10%

SMILES: CC1=CCCC(=C)C2CC(C2CC1)(C)C

Molecular Formula: C₁₅ H₂₄



EC number: 201-746-1

CAS number: 87-44-5



FIRST NATURAL BRANDS LTD

SAFETY DATA SHEET

(In compliance with EU regulation 1907/2006 and its adaptations)

LAVENDER ESSENTIAL OIL, FINE OR CLONAL OR EAST EUROPEAN TYPE

Version: 4.0

Signal word: Danger

Asp. Tox. 1, Skin Sense. 1B, Aquatic Chronic 4

H304, H317, H413

P261, P272, P273, P280

P301 + P310, P302 + P352, P305 + P351 + P338, P321, P331, P333 + P313, P337 + P313, P363

P405

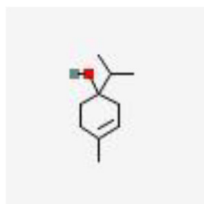
P501



Name: Terpinen-4-ol (p-menth-1-en-4-ol); IUPAC name: 4-methyl-1-propan-2-ylcyclohex-3-en-1-ol; ≤8%

SMILES: CC1=CCC(CC1)(C(C)C)O

Molecular Formula: C₁₀ H₁₈ O



EC number: 209-235-5

CAS number: 562-74-3

Signal word: Warning

Acute Tox. 4, Skin Irrit. 2, Skin Sens. 1, Eye Irrit. 2, STOT SE 3

H302, H315, H317, H319, H336

P261, P264, P270, P271, P280

P301 + P312, P302 + P352, P304 + P340, P305 + P351 + P338, P312, P321, P330, P332 + P313, P337 + P313, P362

P403 + P233, P405

P501



FIRST NATURAL BRANDS LTD

SAFETY DATA SHEET

(In compliance with EU regulation 1907/2006 and its adaptations)

LAVENDER ESSENTIAL OIL, FINE OR CLONAL OR EAST EUROPEAN TYPE

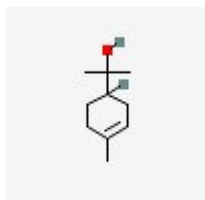
Version: 4.0



Name: α -Terpineol/p-ment-1-en-8-ol; IUPAC name: 2-(4-methyl-1-cyclohex-3-enyl)propan-2-ol; $\leq 2\%$

SMILES: CC1=CCC(CC1)C(C)(C)O/ CC(=C1CCC(CC1)(C)O)C

Molecular Formula: C₁₀ H₁₈ O



EC number: 202-680-6

CAS number: 98-55-5

Signal word: Warning

Skin Irrit. 2, Eye Irrit. 2

H315, H319

P264, P280

P302 + P352, P305 + P351 + P338, P321, P332 + P313, P337 + P313, P362



Name: Geraniol; IUPAC name: (2E)-3,7-dimethylocta-2,6-dien-1-ol and (2Z)-3,7-dimethylocta-2,6-dien-1-ol; $< 3\%$

SMILES: CC(=CCC/C(=C/CO)/C)C

Molecular Formula: C₁₀ H₁₈ O



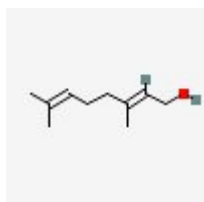
FIRST NATURAL BRANDS LTD

SAFETY DATA SHEET

(In compliance with EU regulation 1907/2006 and its adaptations)

LAVENDER ESSENTIAL OIL, FINE OR CLONAL OR EAST EUROPEAN TYPE

Version: 4.0



EC number: 203-377-1

CAS number: 106-24-1

Signal word: Danger

Skin Irrit. 2, Eye Dam. 1, Skin Sens. 1

H315, H317, H318

P261, P264, P272, P280

P302 + P352, P305 + P351 + P338, P321, P332 + P313, P333 + P313, P337 + P313, P362, P363

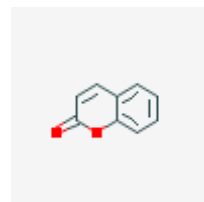
P501



Name: Coumarin; IUPAC Name: Chromen-2-one; <1%

SMILES: C1=CC=C2C(=C1)C=CC(=O)O2

Molecular Formula: C₉H₆O₂



EC number: 202-086-7

CAS number: 91-64-5

Signal word: Warning

Acute Tox. 4, Skin Sens. 1, Aquatic Chronic 3

H302, H317, H412

P261, P264, P270, P272, P273, P280



FIRST NATURAL BRANDS LTD

SAFETY DATA SHEET

(In compliance with EU regulation 1907/2006 and its adaptations)

LAVENDER ESSENTIAL OIL, FINE OR CLONAL OR EAST EUROPEAN TYPE

Version: 4.0

P301+P312, P302+P352, P321, P330, P333+P313, P363

P501



Contains no other ingredients that are classified according to the current state of knowledge and that contribute to the classification of the substance and that must therefore be mentioned in this section.

4. First aid measures

4.1. Description of first aid measures

IN THE EVENT OF EXCESSIVE INHALATION: remove the individual to fresh air and keep at rest. Obtain medical advice immediately.

IN THE EVENT OF SKIN CONTACT: wash with plenty of soap and water, take off contaminated clothing and wash before reuse. If skin irritation occurs get medical advice/ attention. If skin irritation or rash occurs get medical advice/ attention.

IN THE EVENT OF EYE CONTACT: rinse cautiously with water for several minutes. Remove contact lenses if present and easy to do. Continue rinsing. If eye irritation persists get medical advice/ attention.

IN THE EVENT OF INGESTION: rinse mouth with water and get medical advice. Do not induce vomiting unless directed by medical personnel. Seek medical attention immediately.

4.2. Most important symptoms and effects, both acute and delayed

The most important known symptoms and effects are described in the labeling of the product (Section 2) and / or in section 11. Further symptoms are possible.

4.3. Indication of any immediate medical attention and special treatment needed

Symptomatic treatment.

5. Firefighting measures

5.1 Extinguishing media

RECOMMENDED: carbon dioxide, special liquids or dry powder extinguishers

USABLE: foam of halogen extinguishers

INADVISABLE: direct water jet



FIRST NATURAL BRANDS LTD

SAFETY DATA SHEET

(In compliance with EU regulation 1907/2006 and its adaptations)

LAVENDER ESSENTIAL OIL, FINE OR CLONAL OR EAST EUROPEAN TYPE

Version: 4.0

5.2 Special hazards arising from the substance or the mixture

May produce toxic gases (carbon oxides) upon burning.

5.3 Advice for fire fighters

Fire fighters should wear positive pressure self-contained breathing apparatus.
Closed containers may build up pressure under elevated temperatures. If possible, containers should be cooled with a water spray.

6. Accidental release measures

6.1 Personal precaution, protective equipment and emergency procedures

Prevent contact with eyes and skin. Wear eye shields or protective clothing.
Avoid inhalation of vapours
Keep away from open fire or other sources of ignition

6.2 Environmental precautions

Contain spilled material to avoid a possible contamination of the environment.
Avoid any discharge in the sewer system and in natural environment.

6.3 Methods and material for containment and cleaning up

Cover with an inert, non-combustible, inorganic absorbent material.
Sweep up and remove to an approved disposal container.

6.4 Reference to other sections:

See section 8 and 13.

7. Handling and storage

7.1 Precautions for safe handling

To avoid fire hazards, products should not be heated with or exposed to open flames or other sources of ignition.

During the introduction of the ingredients into the final product, ingredients should be normally kept at relatively low temperatures.

Measures should be taken to prevent materials from being splashed into the eyes or the skin. This should include wearing eye shields and protective clothing.

Maintain adequate air circulation in the working areas.

Smoking should not be permitted in areas where the product is handled.

Materials used for cleaning up spillages should be disposed of promptly, preferably by incineration as cases of spontaneous combustion of product soaked in rags have been reported.



FIRST NATURAL BRANDS LTD

SAFETY DATA SHEET

(In compliance with EU regulation 1907/2006 and its adaptations)

LAVENDER ESSENTIAL OIL, FINE OR CLONAL OR EAST EUROPEAN TYPE

Version: 4.0

7.2 Storage

Store in closed containers, away from heat sources, air or light and protected from extremes of temperature.

7.3 Specific end use

Comply with regulations and specifications of the product. No specific recommendations. Apply the rules of handling above.

8. Exposure controls/ Personal protection

8.1 Control parameters

Ventilation: provide adequate ventilation, use local exhaust fan if necessary

Occupational exposure limit values in accordance with Directive 98/24/EC: no data available

8.2 Exposure controls

Eye protection: in general the use of safety glasses (EN 166) is recommended

Hand protection: Use protective gloves resistant to chemicals (standard EN 374-1). Gloves should be replaced regularly and if there is any indication of degradation or chemical breakthrough.

Skin protection: usual precautions

Respiratory protection: in well ventilated areas, respiratory protection is not normally required; in confined poorly ventilated areas, respiratory protection may be required.

9. Physical and chemical properties

9.1 Information on basic physical and chemical properties

(a) Appearance:

Physical state:	liquid
Colour:	colourless to pale yellow

(b) Odour: floral, lavender

(c) Odour threshold: not determined

(d) pH: not determined

(e) Melting point/freezing point: not determined

(f) Initial boiling point and boiling range: not determined

(g) Flash point: >70°C

(h) Evaporation rate: not determined

(i) Flammability (solid, gas): not determined

(j) Upper/lower flammability or explosive limits: not determined

(k) Vapour pressure: not determined

(l) Vapour density: not determined

m) Relative density: 0.878 to 0.892

(n) Solubility (ies): insoluble in water, liposoluble

(o) Partition coefficient: n-octanol/water: not determined



FIRST NATURAL BRANDS LTD

SAFETY DATA SHEET

(In compliance with EU regulation 1907/2006 and its adaptations)

LAVENDER ESSENTIAL OIL, FINE OR CLONAL OR EAST EUROPEAN TYPE

Version: 4.0

(p) Auto-ignition temperature:	not determined
(q) Decomposition temperature:	not determined
(r) Viscosity:	not determined
(s) Explosive properties:	not determined
(t) Oxidising properties:	not determined

9.2 Other information

No data available

10. Stability and reactivity

<u>10.1 Reactivity:</u>	no data available
<u>10.2 Chemical stability:</u>	no significant changes in the composition in time respecting the storage conditions described in 7.2.
<u>10.3 Possibility of hazardous reactions:</u>	no hazardous reactions known.
<u>10.4 Conditions to avoid:</u>	excessive heat, open flames or other sources of ignition
<u>10.5 Incompatible materials:</u>	avoid contact with strong acids and oxidizing agents.
<u>10.6 Hazardous decomposition products:</u>	none in normal use

11. Toxicological information

Information on toxicological effects

(a) Acute toxicity:	no data available
(b) Skin corrosion/irritation:	no data available
(c) Serious eye damage/irritation:	no data available
(d) Respiratory or skin sensitisation:	no data available
(e) Germ cell mutagenicity:	no data available
(f) Carcinogenicity:	no data available
(g) Reproductive toxicity:	no data available
(h) STOT-single exposure:	no data available
(i) STOT-repeated exposure:	no data available
(j) Aspiration hazard:	aspiration toxicity cannot be excluded

Information on likely routes of exposure: no data available

Symptoms related to the physical, chemical and toxicological characteristics: no data available

Delayed and immediate effects as well as chronic effects from short and long-term exposure: no data available

Interactive effects: no data available



FIRST NATURAL BRANDS LTD

SAFETY DATA SHEET

(In compliance with EU regulation 1907/2006 and its adaptations)

LAVENDER ESSENTIAL OIL, FINE OR CLONAL OR EAST EUROPEAN TYPE

Version: 4.0

11.2 Other information on toxicological effects:
1%)

CMR: Gamma-Terpinene (< 1%), Para-Cymene (<

12. Ecological information

- | | |
|--|--|
| 12.1. Toxicity: | Hazardous to aquatic life with long lasting effects. |
| 12.2. Persistence and degradability: | readily biodegradable |
| 12.3. Bioaccumulative potential: | no data available |
| 12.4. Mobility in soil: | no data available |
| 12.5. Results of PBT and vPvB assessment: | no data available |
| 12.6. Other adverse effects: | no data available |

13. Disposal considerations

13.1. Waste treatment methods:

Excessive quantities should not be permitted to enter drains, sewers or watercourses.
Dispose of in accordance with local regulations.

14. Transport information

- | | |
|--|--|
| 14.1 UN number: | not regulated |
| 14.2. UN proper shipping name: | not available |
| 14.3. Transport hazard class (es): | not regulated |
| 14.4. Packing group: | not applicable |
| 14.5. Environmental hazards: | not regulated |
| 14.6. Special precautions for user: | Store in closed containers, away from heat sources, air or light and protected from extremes of temperature. |
| 14.7. Transport in bulk according to Annex II of MARPOL 73/78 and the IBC Code: | not concerned |



FIRST NATURAL BRANDS LTD

SAFETY DATA SHEET

(In compliance with EU regulation 1907/2006 and its adaptations)

LAVENDER ESSENTIAL OIL, FINE OR CLONAL OR EAST EUROPEAN TYPE

Version: 4.0

15. Regulatory information

15.1 Safety, health and environmental regulations/legislation specific for the substance or mixture:

This SDS was written in accordance with Regulation (EC) No. 1907/2006 and its adaptations, modified by Regulation (EU) n°2019/521.

National laws:

Water endangering classification (WGK): class 2

15.2 Chemical safety assessment:

No chemical safety assessment has been carried out.

16. Other information

This safety data sheet completes the specification sheet but does not constitute a guarantee of the properties of the product and is not a contractual legal report. The information is given in good faith on the basis of our best knowledge of the product. However, we cannot accept responsibility or liability for any consequences arising from its use.

We caution the users against the incurred possible risks when the product is used at other ends than the use for which it was initially planned.

It is the user's responsibility during handling, storage and product use to consult the main regulatory texts in force regarding workers and environment protection.

Indication of changes: New safety data sheet in accordance with EC 2019/521

Legend to abbreviations and acronyms used:

EC: European Community

INCI: International Nomenclature of Cosmetic Ingredients

CAS: Chemical Abstract Service

EINECS: European Inventory of Existing Commercial Chemical Substance

Irrit.: irritation

Sens: sensitisation

Tox.: toxicity

pH: potential Hydrogen

STOT: Specific Target Organ Toxicant

PBT: persistent bio accumulative toxic chemical

vPvB: very Persistent very Bio accumulative chemical

UN: United Nations



FIRST NATURAL BRANDS LTD

SAFETY DATA SHEET

(In compliance with EU regulation 1907/2006 and its adaptations)

LAVENDER ESSENTIAL OIL, FINE OR CLONAL OR EAST EUROPEAN TYPE

Version: 4.0

Bibliography:

List of relevant hazard statements, safety phrases and/or precautionary statements:

H226: Flammable liquid and vapour.
H302: Harmful if swallowed.
H304: May be fatal if swallowed and enters airways.
H315: Causes skin irritation.
H317: May cause an allergic skin reaction.
H319: Causes serious eye irritation.
H335: May cause respiratory irritation.
H351: Suspected of causing cancer.
H361: Suspected of damaging fertility or the unborn child <state specific effect if known> <state route of exposure if it is conclusively proven that no other routes of exposure cause the hazard>.
H400: Very toxic to aquatic life.
H410: Very toxic to aquatic life with long lasting effects.
H411: Toxic to aquatic life with long lasting effects.
H412: Hazardous to aquatic life with long lasting effects.
P201: Obtain special instructions before use.
P202: Do not handle until all safety precautions have been read and understood.
P210: Keep away from heat/sparks/open flames/hot surfaces. – No smoking.
P233: Keep container tightly closed.
P240: Ground/bond container and receiving equipment.
P241: Use explosion-proof electrical/ventilating/lighting/.../ equipment.
P242: Use only non-sparking tools.
P243: Take precautionary measures against static discharge.
P261: avoid breathing dust/ fume/ gas/ mist/ vapours/ spray.
P264: wash hands thoroughly after handling
P270: Do not eat, drink or smoke when using this product.
P272: Contaminated work clothing should not be allowed out of the workplace.
P273: avoid release to the environment
P280: wear protective gloves/ protective clothing/ eye protection/ face protection
P301 + P310: IF SWALLOWED: Immediately call a POISON CENTER or doctor/physician.
P301 + P312: IF SWALLOWED: Call a POISON CENTER or doctor/physician if you feel unwell.
P302 + P352: IF ON SKIN: wash with plenty of soap and water
P303 + P361 + P353: IF ON SKIN (or hair): Remove/Take off immediately all contaminated clothing. Rinse skin with water/shower.
P304 + P340: IF INHALED: Remove victim to fresh air and keep at rest in a position comfortable for breathing.
P305 + P351 + P338: IF IN EYES: Rinse cautiously with water for several minutes. Remove contact lenses, if present and easy to do. Continue rinsing.
P305 + P351 + P338: IF IN EYES; rinse cautiously with water for several minutes. Remove contact lenses, if present and easy to do. Continue rinsing.



FIRST NATURAL BRANDS LTD

SAFETY DATA SHEET

(In compliance with EU regulation 1907/2006 and its adaptations)

LAVENDER ESSENTIAL OIL, FINE OR CLONAL OR EAST EUROPEAN TYPE

Version: 4.0

P312: Call a POISON CENTER or doctor/physician if you feel unwell.
P321: specific treatment (see on this label)
P330: Rinse mouth.
P331: Do NOT induce vomiting. Wash contaminated clothing before reuse.
P332 + P313: if skin irritation occurs: get medical advice/ attention
P333 + P313: if skin irritation or rash occurs: get medical advice/ attention
P337 + P313: if eye irritation persists: get medical advice/ attention
P362: take off contaminated clothing and wash before reuse
P363: Wash contaminated clothing before reuse.
P370 + P378: In case of fire: Use ... for extinction.
P391: Collect spillage.
P403 + P233: Store in a well-ventilated place. Keep container tightly closed.
P403 + P235: Store in a well-ventilated place. Keep cool.
P405: Store locked up.
P501: dispose of contents/ container in accordance with local/ regional/ national/ international regulation.

Creation date: 09.06.2016

Date of previous revision: 15.08.2019

Effective date: 08.06.2020

Use and restrictions:

DISCLAIMER: This information relates only to the specific material designated and may not be valid for such material used in combination with any other materials or in any process. Such information is, to the best of the Company's knowledge and belief, accurate and reliable as of the date indicated. However, no warranty, guarantee or representation is made to its accuracy, reliability or completeness. It is the users responsibility to satisfy themselves as to the suitability of such information for his own particular use. Where a declaration is made that allergenic material are not present in any product, this statement is made assuming reasonable levels of detection. It is impossible to guarantee the "absolute absence" of any material.

TISSERAND
AROMATHERAPY

MAROMA

Colibri

First Natural Brands Ltd, Millennium House, King Business Centre, Reeds Lane,
Sayers Common, West Sussex, BN6 9LS England

t: +44 (0)1273 325666 f: + 44 (0)1273 208444 e: info@fnlbrands.com | www.tisserand.com
Company number: 01814713 Registered in England & Wales. VAT number: GB 403 1541 08